



Beaufort County Public Works
Stormwater Infrastructure
Project Summary

Project Summary: Blackburn Pierce Drive

Activity: Routine/Preventive Maintenance

Duration: 08/07/19-08/14/19

Narrative Description of Project:

Project improved 140 L.F. of drainage system. Cleaned out 140 L.F. of channel.

2020-006 / Blackburn Pierce Drive

	Labor Hours	Labor Cost	Equipment Cost	Material Cost	Contractor Cost	Indirect Labor	Total Cost
AUDIT / Audit Project	1.0	\$21.79	\$0.00	\$0.00	\$0.00	\$0.00	\$21.79
CCO / Channel - cleaned out	15.0	\$326.30	\$46.63	\$20.52	\$0.00	\$148.50	\$541.95
HAUL / Hauling	5.0	\$114.95	\$173.20	\$52.44	\$0.00	\$0.00	\$340.59
UTLOC / Utility locates	0.5	\$10.90	\$0.00	\$0.00	\$0.00	\$0.00	\$10.90
2020-006 / Blackburn Pierce Drive Sub Total	21.5	\$473.94	\$219.83	\$72.96	\$0.00	\$148.50	\$915.22
Grand Total	21.5	\$473.94	\$219.83	\$72.96	\$0.00	\$148.50	\$915.22

Before

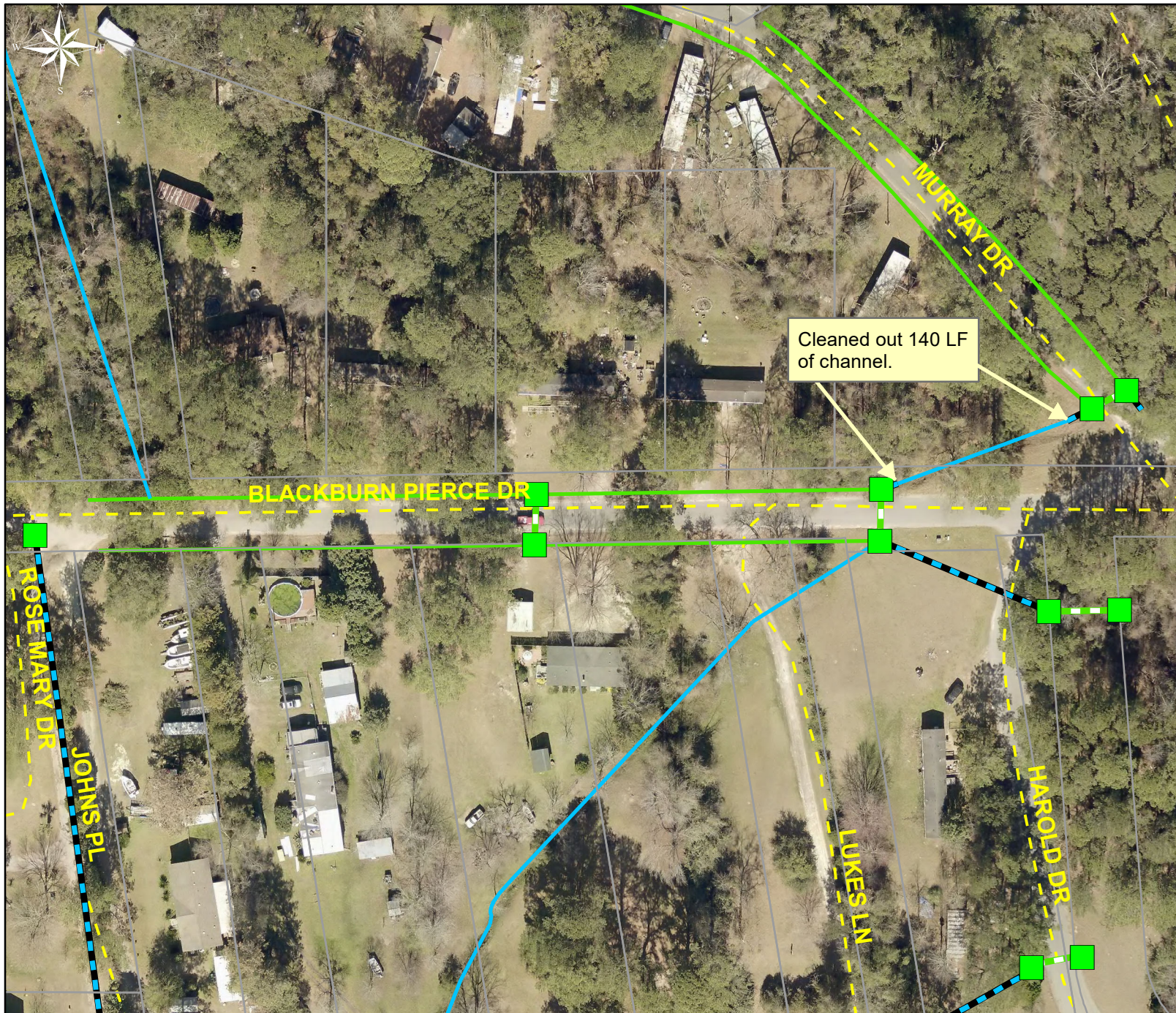


During



After





Project: Blackburn
Pierce Drive

Activity: Routine/
Preventive
Maintenance

Project #:
2020-006

Township/SW Dist:
Port Royal Island/9

Completed:
August 2019

Legend

Drainage Type

- Access Pipe
- Bleeder Pipe
- Channel Pipe
- Channel
- Stream
- Crossline Pipe
- Driveway Pipe
- Lateral
- Lateral Pipe
- River
- Road Pipe
- Roadside
- Roadside Pipe

0 20 40 80 120 160
Feet

1 inch = 99 feet

Prepared By: BC Stormwater Management Utility

Date Print: 09/23/19

File: C:\project summaries map\Blackburn Pierce Drive_2020-006